

MHS Newsletter

Mudgee High School – Locked Bag 2004, Mudgee NSW 2850
ABN: 18 246 198 266 Telephone: (02) 6372 1533
Website: www.mudgee-h.schools.nsw.edu.au
Email: mudgee-h.school@det.nsw.edu.au
<https://www.facebook.com/mudgeehighschool/>



Monday
1 August
Week 3 Term 3
2022

Principal's message

Education Week!

Cudgegong Learning Community Art Show

It is Week 3 of Term 3 and it is Education Week.

This year's theme is 'creating futures – education changes lives' and celebrates the quality education schools like ours provide as well as the opportunities available to everyone in NSW public education.

While we celebrate all the learning that occurs at all levels across our system, this year as a learning community we have concentrated our efforts on celebrating the powerful force that is art. This year, Mudgee High is marking Education Week with a joint display of art works at the Mudgee Arts Precinct. The art works on display are all the effort of students from across the Cudgegong Learning Community which includes schools like Mudgee Public, Cudgegong Valley Public, Gulgong High, Gulgong Public and Kandos Public. After much hard work in the days leading up to this week, the show was opened on Tuesday 2 August, MCed by Mudgee High's school captains.

A huge thanks to Mrs Shearman from Mudgee Public who coordinated the event, Mrs McNeill for the work she put into curating the Mudgee High display, and to Mrs Pickard and her Year 12 Hospitality students who catered the opening event.

The display can be viewed at the Arts Precinct from 9 am until 5 pm daily, Tuesday 2 August to Thursday 4 August, and until 2 pm on Friday 5 August.

Until next week...

Wayne Eade
Principal

Mudgee High School
is a member of the
Cudgegong Learning
Community



Next P&C meeting
Monday 22 August
7 pm in the Learning
Centre
Entry via Douro Street

This issue

- Principal's message
- House Championship tally
- Events calendar
- Weekly P&C awards
- HSIE - Junior assessment schedule - Semester 2
- CLC Education Week Art Show
- Paid advertisement
- Canteen volunteers needed
- Advertisements
- Sponsorship



Education



Dylan Jarvis making canapés, Arian Pearson and Connor Van Reason baristas, Year 12 Hospitality catering at the CLC Art Show opening.



Maddison Turner and Emily Hemingway, Year 12 Hospitality at the CLC Art Show opening.



Dom Lynn - Captain, Sammi Atkinson - Captain, Aidan Hargraves - Vice Captain and Stella Morgan - Vice Captain at the CLC Art Show opening. Below are some exhibits at the show.



House Championship Tally 2022



Cunningham

103328



Blaxland

106351



Lawson

102803









Wentworth

96899

Events calendar

- **Education Week** begins Monday 1 August
- **CLC Artshow** at the Mudgee Art Precinct
 - * Tuesday 2 August from 12 pm to 5 pm
 - * Wednesday 3 August from 9 am to 5 pm
 - * Thursday 4 August 9 am to 5 pm
 - * Friday 5 August 9 am to 2 pm.
- Thursday 4 August - **Australian Mathematics Competition**
- Friday 5 August - **Western Area Athletics trials**
- 15 to 19 August - **Year 10 ski trip excursion**
- 11 to 19 August - **Year 12 Trial HSC examinations**
- Wednesday 24 August - **Max Potential celebration function**
- Thursday 25 August - **Parent/teacher evening for Years 7, 11 and 12** - 4 pm to 7 pm in the gymnasium area.
- Thursday 8 September - **Parent/teacher evening for Years 8, 9 and 10** - 4 pm to 7 pm in the gymnasium area
- 12 to 16 September - **Year 11 examinations**
- 23 September - end of Term 3

Week 2 Term 3 P&C awards

	<p>Ella Edwards</p> <p>Year 7</p> <p>For going about her business in a consistently respectful manner.</p>
	<p>Ryan Levett</p> <p>Year 8</p> <p>For being safe, respectful and responsible in all school settings.</p>
	<p>Benn Hanson</p> <p>Year 9</p> <p>For the positive start he has made to Term 3.</p>
	<p>Daniel Pegg</p> <p>Year 10</p> <p>For excellent work across a range of his subjects.</p>
	<p>Ashlyn Richardson</p> <p>Year 11</p> <p>For being consistently safe, respectful and responsible.</p>
	<p>Sammi Atkinson</p> <p>Year 12</p> <p>For the consistently hard work she puts into her studies.</p>



CHOOSE GOOD FRIENDS

You can choose good friends by focusing on the way a friendship makes you feel, not what it looks like. Ask yourself:

- ◇ Do I feel better after spending time with this person?
- ◇ Am I myself around this person?
- ◇ Do I feel secure, or do I feel like I have to watch what I say and do?
- ◇ Is the person supportive and am I treated with respect?
- ◇ Is this a person I can trust?

Then put yourself through the same interview :).

HSIE - Junior Assessment Schedule - Semester 2

Students in Year 7 are studying Stage 4 Geography for the whole year. Students in Year 8 are studying Stage 4 History for the whole year. Year 9 are studying History in Semester Two. Year 10 are studying History in Semester Two. Some students in Years 9 and 10 have elected to study either Commerce 01 and/or Commerce 02. Some students in Year 8 have elected to study Commerce 08.

The following assessment schedule is a guideline. There may be some minor variations, however, students will be adequately notified of any changes to due dates.

Year and Subject	Assessment Task	Task Weighting	Due Date Please note that the due date for the task falls within the listed week. The exact due date for each task will vary within that week depending on which day the student has that class.
Year 7 Geography	Literacy Task Assignment – Access to Freshwater Examination Class Participation	15% 40% 30% 15%	Week 5 Term 3 Week 9 Term 3 Week 3 Term 4 Ongoing
Year 8 History	Assignment – Medieval Europe Literacy Task Examination Class Participation	40% 15% 25% 20%	Week 8 Term 3 Week 2 Term 4 Week 4 Term 4 Ongoing
Year 9 History	Assignment – Movement of Peoples Literacy Task Examination Class Participation	40% 15% 25% 20%	Week 9 Term 3 Week 1 Term 4 Week 3 Term 4 Ongoing
Year 10 History	Assignment – Changing Rights & Freedoms Literacy Task Examination Class Participation	40% 15% 25% 20%	Week 6 Term 3 Week 10 Term 3 Week 3 Term 4 Ongoing
Commerce 02	Assignment – Law in Action Literacy Task Examination Class Participation	40% 10% 30% 20%	Week 8 Term 3 Week 2 Term 4 Week 3 Term 4 Ongoing
Commerce 01	Literacy Task Assignment – Economic & Business Environment Examination Class Participation	10% 40% 30% 20%	Week 4 Term 3 Week 9 Term 3 Week 3 Term 4 Ongoing
Commerce 08	Assignment – Promoting & Selling Literacy Task Examination Class Participation	40% 10% 30% 20%	Week 8 Term 3 Week 5 Term 3 Week 4 Term 4 Ongoing

If your child is unable to meet the due date for an assessment task, they will need to complete an application for Special Consideration. These forms can be collected from the HSIE staffroom. It is the responsibility of the student to collect this form, complete it and return it to the head teacher of HSIE or their classroom teacher. In the event of a sudden absence, perhaps the result of illness or misadventure, the form can be completed after the due date. In all other circumstances, application for Special Consideration must be completed in advance of the due date.

Accessing Google Classrooms

Students should be making the most of the Google Classroom facility for their HSIE studies.

To access these classrooms, they will need the following entry codes:

Subject	Entry Code		Subject	Entry Code
Year 7 Geography	jhb4mzt		Commerce 08	5yxpbbu
Year 8 History	c4yb7er		Commerce 01	66t45cz
Year 9 History	6rrdr5m		Commerce 02	ek6eogu
Year 10 History	uw5os5t			

Students will need to sign into the Google platform using their @education.nsw.gov.au login details.

Be aware that senior assessment tasks are printed on a green cover sheet and junior assessment tasks are printed on a yellow cover sheet.

NSW Education parent app

The app is linked to the school website and is designed to streamline communication between schools and parents and carers, with features such as push notifications to your phone so you never miss any important news or an upcoming event.

Key features of the Parent App include:

- Ability for parents and carers with children in multiple schools to receive newsletters and updates within the same app.
- Ability for parents and carers to receive notifications on their phones when news and events are posted on the website by the school.
- Customisable information feeds filtered by school year for parents and carers, and a direct contact line to the school.
- Upcoming features include parent essentials (which keeps your school-related apps in one place), emergency updates, and the ability to accept parent online payments.

Download the app on [Apple Store](#) and [Google Play](#).

Cudgegong Learning Community (CLC)

Education Week Art Show

The Cudgegong Learning Community Art Show will be on display during Education Week at the Mudgee Arts Precinct in the Conference and Seminar rooms.

This year's Education Week theme is '*creating futures – education changes lives*' and celebrates the quality education provided by CLC schools and the opportunities available to everyone in NSW public education.

The Art Show is an initiative of the Cudgegong Learning Community which comprises the students, staff, families, and community of the public schools (primary and high) in the Mid-Western and surrounding regions. It is a showcase of the 3000 students in the CLC and the artworks are a great representation of the outstanding achievements of our students. Some artworks were created by students in response to thinking about what they wanted to be in the future and considering pathways to get there or researching a role model to see how education helped create their future.

Mudgee High will be displaying artworks from Years 7 and 11. These will include self-portrait mixed media paintings, lino prints, sculptures and photographs.

Members of the public and school communities are invited to attend and help celebrate the achievements and share in the success of public education in our region.

Mudgee High hospitality students will be providing morning tea for the opening on Tuesday.

What: Cudgegong Learning Community Art Show

Where: Mudgee Arts Precinct – Conference and Seminar Rooms (upstairs)

Who: Open to the public and booked school groups

When: Education Week

- Tuesday 2 August from 12 pm – 5 pm
- Wednesday 3 August from 9 am – 5 pm
- Thursday 4 August from 9 am – 5 pm
- Friday 5 August from 9 am – 2 pm.



A selection of work from Mudgee High to be on display at the CLC art show...



Mixed media self portraits by Cooper Stoddart (left) and Samyrah Proctor - Year 7



Sculpture by Grace Sievers - Year 11



Sculptures by Holly Consadine (above) and Sarah O'Neill - Year 11



Canteen volunteers needed

Mudgee High School canteen provides healthy food for students and staff.

The canteen is managed by the P&C and all profits are used to fund school improvements and initiatives.

The canteen relies on assistance from volunteers to help with food preparation.

If you would like to volunteer some of your time, please contact the Canteen Manager, Michelle, on 0407 131 950 or Mr Holleman at carl.holleman@det.nsw.edu.au.

Any amount of time you can spare to be available would be greatly appreciated.



Second-hand school uniform

Mudgee High would be very grateful for the donation of any second-hand school uniform.

If you have any superfluous school clothing that is still in usable condition, please drop it off to the school office. It will be gratefully received and used to assist students and families who may be struggling to supply their own.

Paid advertisement

(Paid advertisements do not carry the endorsement of Mudgee High)

Miss May's English Tutoring Years 7-12



All levels
Essay Help
Study Skills Courses
Creative and Critical Writing Courses

One on One tutoring \$60 per hour

Bring-a-Friend tutoring \$30 each per hour After School Homework Club Coming Soon

With Qualified English Teacher Johanna May (First Aid and WWCC).

0407 455 330



Advertisements

Canteen price list as of April 2022

Hot Food

Chicken and corn roll	2.50
Pizza rounds	3.50
Beef traveller pie	5.00
Potato pie	5.00
Beef and gravy roll	6.50
Hot dog	4.00
Hot dog with cheese	4.50
Beef pie (gluten free) order only	5.00
Mayonnaise/sauce portions	0.40

Wraps and Sandwiches

6.00

Rolls

6.50

Can be made on gluten free rolls by request – order only.

Ham and salad
Chicken and salad
Egg and lettuce
Cheese and salad
Chicken, mayo and shallots
Chicken Caesar
Sweet chilli chicken and avocado

Snack Food

Red Rock Deli chips	1.50
Grain Waves	1.50
Chip Roll	2.70
Blueberry Muffin	1.50
Watermelon tubs	3.00
Trail mix pots	3.00
Fruit salad	5.00
Jelly cups	3.00
Seasonal fruit	1.00

Milk

300ml flavoured milk	3.00
500ml flavoured milk	4.50
600ml plain milk	2.50
1 litre plain milk	3.50
375ml Nippy's flavoured milk	3.50

Cold Drinks

750ml Cool Ridge Spring Water	4.00
600ml Spring water	2.00
Juice Bombs	2.50
Berri Pop Tops	2.00
Lipton's Peach iced tea	4.50
375ml Coke No Sugar	2.50
375ml Sprite No Sugar	2.50

Ice Creams

Paddle Pop	
(chocolate, banana, rainbow)	2.00
Twisted frozen yoghurt	
(choc/van, straw/van, mango/watermelon)	2.50
Quelch Icy Tubes	0.60

Salad of the Day

Availability varies day-to-day

Curried chicken potato salad	7.50
Mexican chicken and guacamole salad	7.50
Greek salad	6.00
Pasta salad	6.00
Sushi	5.00
Garden salad	6.00
Chicken Caesar salad	6.00
Buddha bowl	7.50

Nuts may be used in salads. If you have an allergy, check with canteen staff before ordering.

Everyday Daily Specials

Monday

Sweet chilli wrap (order only)	6.00
Garlic bread	2.00

Wednesday

Oven baked spiced potato wedges	4.00
Sour cream/Sweet chilli sauce	0.50

Thursday

Chicken burger	5.50
(gluten-free available – order only)	

Friday

Garlic bread	2.00
--------------	------

Terms 2 and 3

Hot Milo	2.50
----------	------

Nuts may be used in some specials. If you have an allergy, check with canteen staff before ordering.

Changing Daily Specials

Check our daily menu board or student notices for other specials which may include:

Soup – Pasta – Focaccia – Curries – Sliders

**Please note the new
'Weekly Specials' menu**

MUDGEES PERFORMING ARTS SOCIETY

Beauty and the **BEAST**

the pantomime

FRI AUG 12 7PM

SAT AUG 13

2PM AND 7PM

SUN AUG 14 2PM

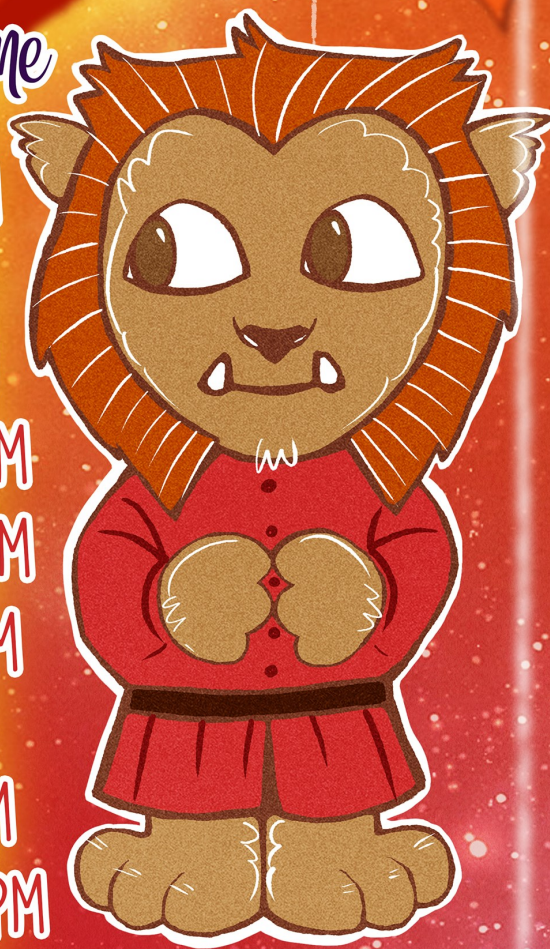
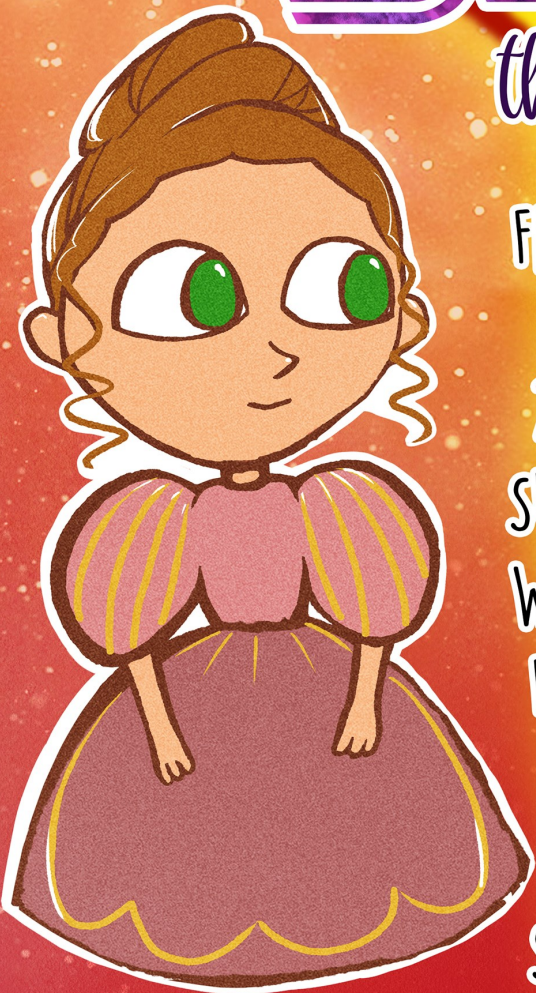
WED AUG 17 7PM

FRI AUG 19 7PM

SAT AUG 20

2PM AND 7PM

SUN AUG 21 2PM



ADULTS \$25 CHILDREN \$10 (UNDER 12)

SENIORS/HIGH SCHOOL \$15

FAMILY \$60 (2 ADULTS, 2 CHILDREN)

TICKETS AT WWW.MPAS.ORG.AU



Club Mudgee Max Potential Celebration 2022

Be inspired by the vision of our future community leaders as they end a transformative six month personal leadership journey with Max Potential. Celebrate the growth in their confidence and discover their ideas for how to make a difference through their Community Service Pitch.



Wednesday 24 August
5pm-7pm
Club Mudgee

**99 Mortimer Street,
Mudgee NSW 2850**

RSVP: Wednesday 17 August
to damian@maxpotential.com.au
Please include: program location and
names of those attending

Bring your phone and headphones
to watch films created by our young adults!



**CLUB
MUDGEE**
THE MUDGEE SOLDIERS CLUB LIMITED





Applications for Glencore Coal's NSW General Grants are now open.

Are you a community group that has a positive local impact in the Singleton, Muswellbrook or Mid-Western LGA? If so, we'd love to hear from you.

Our grants offer funding of up to **\$2,500** to support not-for-profit groups.



To apply, visit:
<https://glencore.smartygrants.com.au/2022GeneralRd2> or scan the QR code.

Applications run from:
1 August to 31 August 2022



Applications for Glencore Coal's New South Wales Junior Sports Development Grants are open.

Are you a junior not-for-profit sporting club in the Singleton, Muswellbrook or Mid-Western LGA?

If so, we'd love to hear from you.

Our grants offer funding of up to **\$7,500** to support (under 18) junior sports participants.



To apply, visit:

<https://glencore.smartygrants.com.au/2022nswjsdp2> or scan the QR code.

Applications run from:

1 August to 31 August 2022

Positions vacant: Casual Pool Attendants - Mudgee and Gulgong

Mid-Western Regional Council is currently advertising for Casual Pool Attendants in Mudgee and Gulgong.

Please find below a link to the vacancies and how to apply.

<https://midwestern.lgsoftwaresolutions.com.au/Pulse/job/MVFTVZ/Pool-Attendants>

VOLUNTEERS NEEDED!

RSPCA NSW Central West Supporter Group

RSPCA NSW's Central West Supporter Group are a group of active and enthusiastic volunteers who fundraise and support local animal owners with responsible pet ownership and animal health programs.

What this volunteer role looks like:

- ◆ Assisting with fundraising events
- ◆ Promoting RSPCA NSW and local community programs
- ◆ Assisting with the organising and coordinating of events

Scan our QR code to find out more



CLEANERS REQUIRED

Joss Facility Management are looking for cleaning staff to work at local Government sites across regional NSW.

PPE, Training and Uniforms provided.

Applicants need to provide a valid Working With Children Check upon application and successful applicants will be required to undertake a pre-employment medical prior to commencement.

Please contact Joss Facility Management via email on careers@jossgroup.com.au



Check us out on Facebook [Joss Cleaning](#)

or visit our webpage
www.jossgroup.com.au



Sponsorship

Mudgee High School - Link Program

Proudly supported by

GLENCORE

Ulan Coal Mine