

MHS Newsletter

Mudgee High School – Locked Bag 2004, MUDGEE NSW 2850
ABN: 18 246 198 266 Telephone: (02) 6372 1533 Facsimile: 6372 6321
Website: www.mudgee-h.schools.nsw.edu.au
Email: mudgee-h.school@det.nsw.edu.au
<https://www.facebook.com/mudgeehighschool/>



Monday
6 May
Week 2 Term 2
2019

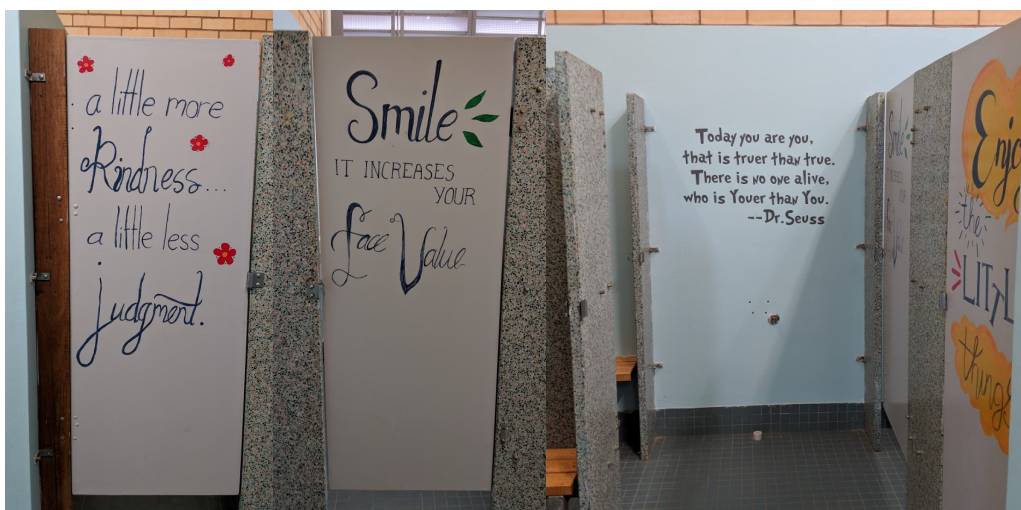
Principal's Message

Amenity

Anyone who has set themselves the task of sprucing up something – repainting a room, refurbishing a piece of careworn furniture or maybe even restoring a car – understands the joy that comes with completing such a project.

A small team of Year 10 girls, led by Ms Smith, recently undertook a project to improve the appearance of the change rooms attached to the gymnasium. Ms Smith reports she had a variety of helpers over the course of the project, but the main ones were: Emma Clulow, Alana Drent, Claire Finter, Maree Ioane and Emily Nott. The girls put in two days and an afternoon after school to complete all of the work.

To paraphrase Ms Smith, we hope all of the “students appreciate all the time and work” that has gone into the changes realised.



In other news that should be no surprise to anyone, handball is an incredibly popular break pastime at Mudgee High. So popular that in the senior area, students had scratched into the bitumen additional squares to take the two six-square courts to nine squares a piece!

In the holidays, Mr Howe our groundsman, masked up and completed three coats of bright yellow to take the number of squares available in the senior area up to a total of eighteen. In addition, several of the courts in the Year 7 area were repainted to make “line balls” and “outs” so much harder to dispute!

The amenity of the senior area will improve in the coming months with the provision of shelters over the already established aluminium picnic tables, making them available in inclement weather, as well as improving their amenity in summer. The only worry I have is the possibility of grey nomads moving in on weekends once the shelters have been erected; the south side of the school with its tree cover, well-maintained grassy areas and soon-to-be-erected sheltered picnic tables may prove too great a temptation.

Until next week...

Wayne Eade
Principal

*A Member of the
Cudgegong Learning
Community*

PLEASE SEE OUR WEBSITE
FOR THE COMPLETE
CALENDAR OF EVENTS



COMING EVENTS

- 14, 15 and 16 May - NAPLAN testing
- 22 May Cross Country
- 27 May P&C meeting
- 31 May Athletics Carnival
- 13, 14, 15 June - Seussical the Musical

THIS ISSUE

- Principal's Message
- MHS P&C Meeting
- Writing Friday
- Castlereagh Group 12 Junior Judging
- Open Girls Basketball
- Positive Behaviour for Learning
- Gummi Bear Governments
- Cross Country
- Athletics Carnival
- Bell Shakespeare performance dates
- Anti-bullying Alliance update
- The Learning Curve
- Tell Them From Me student survey
- NAPLAN
- Advertisements
- Sponsorship



MUDGEES HIGH SCHOOL P&C

The next meeting of the Mudgee High School P&C will be held on Monday 27 May 2019 at 7pm in the school library.

Entry via Horatio Street.

Week 1 Term 2 Awards

P&C AWARDS: Year 7: Darcy Endacott, Year 8: Holly Consadine, Year 9: Darcy Cavanagh,
Year 10: Katinka Booth, Year 11: Sam Callaghan, Year 12: Sinead Matheson-Gayford

SRR AWARD: Shellie O'Malveney - Year 8

Writing Friday

It's in Grandad's shed....

Write about an interesting object you might find in this shed.

In your writing, use:

- * First person
- * Descriptive words
- * The word 'dilapidated' – it's an adjective that means 'old, damaged and not in good condition'

Your goal:
200 words
20 minutes

Castlereagh Group 12 Junior Judging

On 1 March 2019, 15 students participated in the Castlereagh Group 12 Junior Judging final, hosted by the Mudgee Show Society, with the hope of qualifying for the Sydney Royal Easter Show. The students competed against local schools and the junior public who are already employed in the agricultural industry. Students were required to judge across grain, vegetable, poultry, beef cattle, meat sheep, wool and wool sheep disciplines. Mudgee High school students demonstrated their understanding and skills in the disciplines and were congratulated on their behaviour and aptitude. Mudgee High School students placed in all categories offered on the day, with 5 students qualifying for the state finals held at the Sydney Royal Easter Show. The students are commended for the dedication shown participating in this annual event, their ability to demonstrate their understanding of agriculture and represent Mudgee High School within the community.

Beef Cattle Judging: 2nd Cooper Cowden, 3rd Madeline McPherson
 Wool/Fleece Judging: 2nd Riley Leeson, 3rd Bailey Wrage
 Vegetable Judging: 1st Connor McNeill, 2nd Emily Nott
 Merino Sheep Judging: 3rd Beau Cook
 Poultry Judging: 3rd Emma Hawkins
 Grain Judging: 1st Riley Leeson, 3rd Campbell Wall
 Meat Sheep Judging: 3rd Riley Leeson

The students who qualified for the state finals competed against students from schools all over the state and those already working in the agricultural industry at the Sydney Royal Easter Show. The students all represented Mudgee High School and the local community to a high standard.

Congratulations to Campbell Wall who placed 5th in the state for Grain Judging.



Open Girls Basketball

On the 11 March the Open's Girls basketball team travelled to Dubbo to participate in a divisional day for Western Area. The team consisted of: Alanna Drent, Alexis Gaffney, Caoimhe Griffiths, Charli Hayes, Maree Iaone, Jada Le Brocq, Lauren Reed, Emalee VanBruchem and Grace Woodgate.

The day started off with three pool games. The first game was against Gulgong High. Mudjee High won 8 to 5. The next game was against Narromine High. Mudjee High girls won the game 12 to 4. The final pool game was against Cobar High School. In a physical game the girls were again victorious winning 12 to 2.

The team then progressed to the final against Gilgandra High School. In a hard fought battle the team went down 24 to 8. The girls played very well and never gave up. The team is congratulated on their efforts both on the day and for the many lunch times they devoted to training.

Mrs Kurtz



Positive Behaviour for Learning

Our PB4L focus during the first week back of each term is to review how our universals of being Safe, Respectful and Responsible apply across All Settings.

To be Safe in all settings:

- Follow staff instructions.
- Maintain personal space.
- Stay in bounds.
- Report issues of concern.

To be Respectful in all settings:

- Arrive at class on time.
- Show regard for others' personal space and property.
- Use appropriate language.

To be Responsible in all settings:

- Be accountable for your own learning.
- Take care of your own and school property.
- Be accountable for your behaviour.
- Be prompt.

Following these expectations helps us create a positive teaching and learning culture at Mudjee High School.

Next week we will look closely at the Colour Recognition System and the Tick-its. If you have any questions about PB4L please feel free to contact the school or refer to the comprehensive information in the Student Planner.



Gummi Bear Governments

During the final week of last term, Year 11 Modern History students refreshed their knowledge of the various forms of governments and political ideologies by using Gummi Bears.

Divided into groups, the students were required to research five different terms, That could include things like direct democracy, communism, coup d'état, oligarchy, anarchy, revolution, etc. Once they understood what each term meant, the students were required to create a scene using Gummi Bears that reflected each of the terms. Students were given small whiteboards, markers, paperclips, and anything else they could find to help build their scenes.

As some groups stormed through the task, they were given an extension task of recreating three scenes from World War I, which was a unit they had just completed.

These terms have been very useful in their current topic, the decline and fall of the Romanov Dynasty. They are working through the historical context of late 19th and early 20th Century Russia. Feudalism and autocracy have popped up more than once!



Mudgee High Cross Country 2019

The Cross Country will take place on **Wednesday 22 May**. It is compulsory for students in years 7, 8, 9 and 10. Students in years 11 and 12 may nominate if they wish to participate and are encouraged to do so. Students must participate in the school event to be eligible for Western Area Trials selection.

The course will start and finish at Walkers Oval and run along the walking track to Lawson Park.

Students will walk under teacher supervision to Walkers Oval at the beginning of Period 3 and will be brought back to school by lunch time.

Students will need to listen to the announcements in roll call and on assembly for further information.



Athletics Carnival 2019

The athletics carnival is on **Friday 31 May** at Walkers Field.

This is a normal school day and attendance is expected. Students will need to bring their ID card to swipe in at the beginning of the day and events will start at 9am. Bus companies will be diverted to Walkers Oval and students will need to be at the carnival by 8.55am.

The events held on the day will include 100m, 200m, long jump, high jump, discus, shotput, javelin and novelties. The 400m and 3000m will be held at 8:30am before the main carnival.

The athletics carnival is about participation, having fun and supporting your house. As well as competitive events, there will be a number of non-competitive, fun events involving year groups and staff. Students are encouraged to participate in all events and be dressed up in sporting house colours.

The school canteen will be running on the day and Year 12 will make available goodies to support their fundraising.

The longer events will be held prior to the carnival and students will be informed of this date in the daily messages during roll call. These include the 800m, 1500m, 3000m and triple jump. Students must nominate to attend. They can do this by coming to the PE staffroom.

Any parent helpers are greatly appreciated and if you would like to help, please contact the school on 6372 1533.



**Bell Shakespeare Company
Presents...**

BELL SHAKESPEARE.

The Human Experience

What is it all about?

Shakespeare understands humans and reflects upon this in many of his plays. He displays our flaws and areas of expertise, as well as discussing the concepts of humanism and existentialism. They will be using key speeches from *The Merchant of Venice*, *The Tempest*, *Hamlet*, *Richard III*, *Othello*, *Henry IV Part One* and the Refugee speech from *Sir Thomas More*. This will assist you with your senior studies, especially for Advanced and Extension English.

Who: Year 10, 11 and 12

When: Week 5, Monday 27 May 2019

Where: Mudgee High School

Cost: \$5 to the Front Office

If you have any other questions, please ask one of the English staff or Ms Tetley.



Words, Words, Words

What is it all about?

This is a humorous, entertaining and informative journey celebrating language and words. Students will explore, interrogate and celebrate the literary techniques, language as well as words and help them demystify scripts and stage performances. This will assist with their English studies.

Who: Years 9 and 10

When: Week 5, Monday 27 May 2019

Where: Mudgee High School

Cost: \$5 to the Front Office

If you have any other questions, please ask one of the English staff or Ms Tetley.

Anti Bullying Alliance update

We had a wonderful presentation on assembly on counteracting bullying using kindness this week. Some fascinating statistics were shared with our students on the effects of being kind.

Did you know:

- Witnessing kindness releases oxytocin. This is the hormone that creates the same warm and fuzzy feeling we get from hugs.
- Kindness stimulates the hormone serotonin. This is a hormone that contributes to wellbeing and happiness.
- Engaging in acts of kindness produces endorphins, which create the same natural high exercise provides.
- People who are kind on a regular basis have 23% less cortisol in their body. Cortisol is the stress hormone.
- In one study, a group of highly anxious people performed just six acts of kindness a week for one month. These same people experienced an increase in positive moods and better relationships.
- Kindness is contagious. Noticing someone being kind can make you feel good and make you more likely to be kind yourself.

*From Random Acts of Kindness – Kindness Health Facts.

We look forward to a term filled with kindness at Mudgee High School.

Useful Resource

Bullying No Way <https://bullyingnoway.gov.au/> is an invaluable resource for understanding and exploring ways to counteract bullying. There are resources for students and parents/carers. Here is a brief overview of some of the content that might be useful for you if your child/ward is experiencing bullying.

Follow the link **For teens** to find information on the following topics:

- Learn about bullying
- I'm being bullied
- I've been called a bully
- I've seen someone being bullied
- Get involved in your school
- Get help and more information.

Each topic gives detailed information to help students understand how they feel and give them strategies on what they can do to help themselves in a situation.

<https://bullyingnoway.gov.au/YourRole/ForTeens/Pages/default.aspx>

Follow the link **For parents and carers** for a comprehensive list of ways you can help your child/ward if they are experiencing bullying. This includes information on

- Recognising the warning signs of bullying,
- How to talk about bullying effectively to young people,
- What to do if your child tells you they are being bullied
- How to work effectively with your school to help prevent bullying
- Where to go for information about online safety
- Links to related organisations to assist with issues of bullying.

<https://bullyingnoway.gov.au/YourRole/Pages/For-Parents-and-carers.aspx>

At Mudgee High School all students are encouraged to report any bullying concerns immediately to a teacher they trust. The faster a report is made, the faster there will be action.

Mrs Willetts, Mr Saunders and Ms May are the team leaders of the Anti-Bullying Alliance and can be contacted via the school if you or your child/ward have any concerns.



SECONDARY

Parent Newsletter

The Learning Curve™

Wellbeing Builder:

Middle – REVISING AND PRACTISING
Senior – DELIBERATE PRACTICE AND
REVIEWING

Wellbeing Element:

SKILLS AND ACHIEVEMENT

Character Strength:

LOVE OF LEARNING

Wellbeing Fitness Challenge:

PHOTO 7

Wellbeing Reflection Activities:

Middle – REVISING AND PRACTISING,
Senior – DELIBERATE PRACTICE AND REVIEWING (see website)

Parent Wellbeing:

When things don't go your way, you can learn much about yourself.
Describe a time you have experienced this, what you learned and
how you grew as a person.

As learned from The Changing Brain and Brain Growth Abilities, the brain thrives on deliberate practice and looking for patterns to build strong and fast brain pathways. To enable this, after students have taken notes in class, it is essential for them to review and revise them nightly for five minutes in each subject; doing this is often called memory coding.

When students regularly train for sport and practise their musical instruments their skills and capabilities develop, and reviewing and revising learning are no different. Thinking tools are effective ways to organise learning visibly in the brain.

Facts relating to how much the brain retains:

- Should notes not be reviewed within 24 hours, 60% to 80% of the learnt material is forgotten.
- After a month with no reviews, only 3% to 4% is remembered.
- The brain pathways which were created wither and die.
- When 50 minutes of learning is not reviewed regularly, it takes 30 to 40 minutes to relearn it; why learn it in the first place?

Renowned Polish pianist, Ignace Paderewski, once said, "If I miss one day's practice, I notice it. If I miss two day's practice, the critics notice. If I miss three days practice, the audience notices it."

"I'm a great believer in luck; I find the harder I work the more of it I have." Woodrow Wilson





Tell Them From Me student survey: Information and consent form for parents and carers

Dear Parents and Carers,

In Term 1 2019, our school is taking part in the Tell Them From Me student survey. The survey will provide us with valuable feedback on what our students think about school life, how engaged they are with school and the different ways that teachers interact with them. Schools in Australia and around the world have used the Tell Them From Me survey to help them improve. The survey is completed on-line and is run by an independent research company, The Learning Bar, which specialises in school-based surveys.

Staff in schools will not be able to identify individual students from their responses. To ensure confidentiality, participating students will receive a unique username and password. Where fewer than five students respond to a question, the results will be suppressed. The survey typically takes 30 minutes or less to complete and will be administered by the school during normal school hours. Once the surveys are completed by students, reports are prepared and in most cases are available to schools within three business days.

As well as schools getting student feedback, the Department of Education, through the Centre for Education Statistics and Evaluation (CESE), has access to data from across NSW and is running a research project to look at state-wide patterns of student wellbeing, engagement and effective teaching practices. The research is looking at how these things impact on student outcomes, including academic performance. Individual students will not be identified in any CESE publications, and all information will be handled in accordance with the relevant privacy legislation. Students' personal information will not be disclosed by the department to any other person or body other than as required by law.

This research will help schools in New South Wales to better understand how to improve student wellbeing and engagement. It will also help teachers and principals discuss what works to improve student outcomes.

Participating in the survey is entirely voluntary. Your child will not take part if either you or your child do not wish. If, during the survey, your child is uncomfortable, he/she can choose to stop the survey at any time. The majority of questions in the survey can be skipped.

If you do not want your child to take part in the survey, please complete the attached form and return it to the school by 6/5/2019.

More information about the survey and the research is available in English on the CESE website:

<http://surveys.cese.nsw.gov.au/information-for-parents>

Wayne Eade
Principal
Mudgee High School

Dr Jenny Donovan
Executive Director
Centre for Education Statistics and Evaluation

Tell Them From Me Student Feedback Survey non-consent form

If you **do not** want your child to participate in the student feedback survey, please sign this form and return it to the school office by 6 May 2019.

I DO NOT give consent for my child/children to participate in the Tell Them From Me student feedback survey.

Name of student 1
.....

Roll Class of student 1
.....

Name of student 2
.....

Roll Class of student 2
.....

Name of student 3
.....

Roll Class of student 3
.....

Name of student 4
.....

Roll Class of student 4
.....

Name of parent/carers
.....

Signature of parent/carers
.....

Date
.....

Naplan

During May 2019, students at our school in Years 7 and 9 will sit the NAPLAN paper assessments. The schedule for tests is as follows:

Tuesday 14 May	Wednesday 15 May	Thursday 16 May
Language Conventions test (spelling, grammar and punctuation) Writing Test	Reading Test	Numeracy Test

On Friday 17 May, a 'catch-up' day is scheduled for students who missed a test.

Students may be exempt from the NAPLAN tests if they:

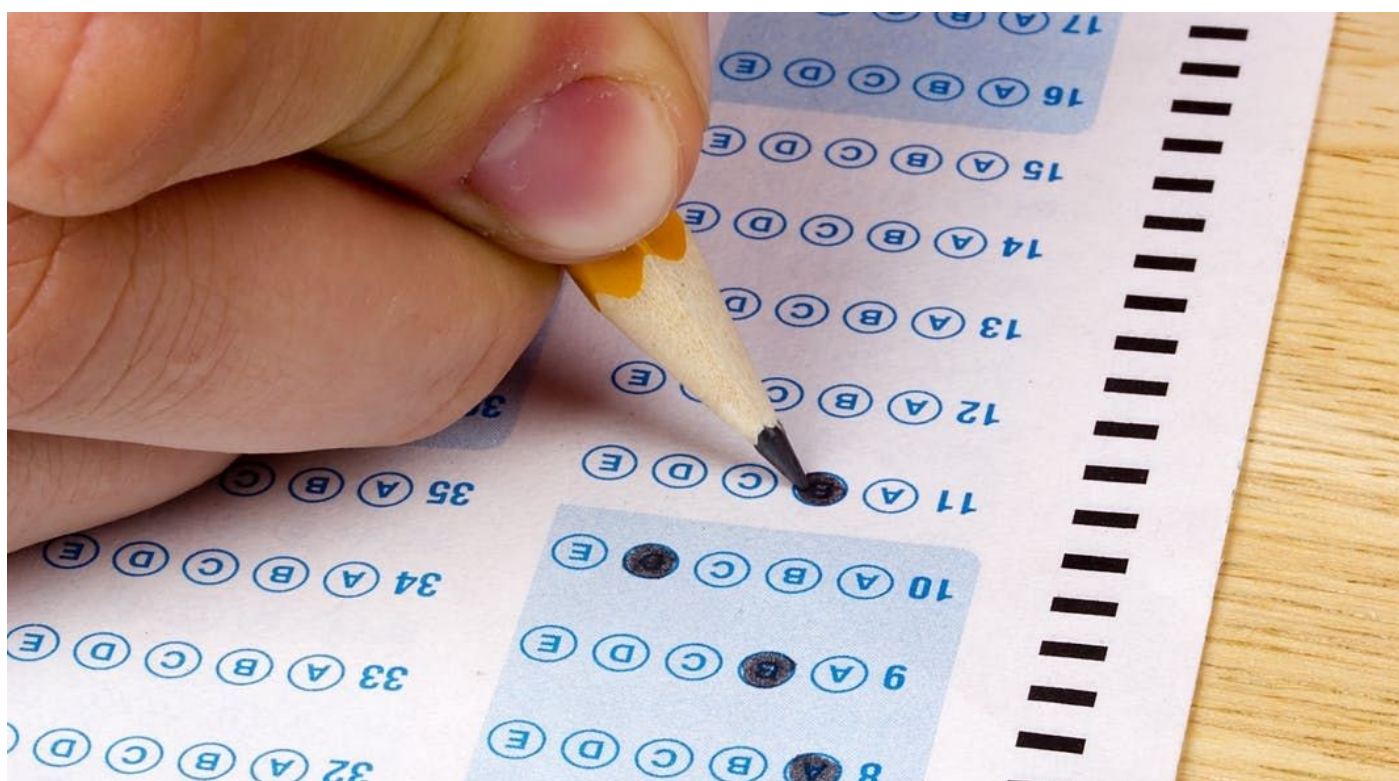
- Are newly arrived in Australia (less than one year before the test) and with a language background other than English.
- Have significant intellectual disability and/or significant co-existing conditions which severely limit their capacity to participate in the tests.

All other students are expected to participate in the tests.

Disability adjustments which reflect the student's normal level of support in the classroom may be provided. Large print, braille, coloured paper versions and electronic tests are also available to meet the needs of individual students. Access to disability adjustments or exemption from the tests must be discussed with the school principal and a parent or carer consent form must be signed.

Students may be withdrawn from NAPLAN by their parent or carer after consultation with the school principal. To withdraw your child from NAPLAN, a parent or carer consent form must be signed. Please contact the school if you need to discuss your child's participation in NAPLAN.

Any questions? Contact the NAPLAN team on 1300 119 556 or naplan.nsw@nesa.nsw.edu.au. For further information about NAPLAN, visit the [NESA website](#).



MUDGEE HIGH SCHOOL CANTEEN MENU 2019

HOT FOOD AVAILABLE EVERY DAY

CHICKEN & CORN ROLL	\$ 1.70
PIZZA ROUNDA	\$ 3.00
BEEF TRAVELLER PIE	\$ 4.00
CURRY CHICKEN PIE	\$ 4.50
POTATO PIE	\$ 4.50
CHILLI BEEF SAUSAGE ROLL	\$ 3.50
SAUSAGE ROLL	\$ 3.00
BEEF & GRAVY ROLL	\$ 5.00
HOT DOG WITH CHEESE	\$ 4.00
HOT DOG	\$ 3.50
GLUTEN FREE BEEF PIE	\$ 4.50
MAYO/SAUCE PORTIONS	\$ 0.30

ROLLS & SANDWICHES

HAM SALAD	\$ 5.00
EGG SALAD	\$ 5.00
CHEESE SALAD	\$ 5.00
CHICKEN MAYO & SHALLOTS	\$ 5.00
CHICKEN CAESAR	\$ 5.00
SWEET CHILLI CHICK/AVOCADO	\$ 5.00

ALL ROLLS CAN BE MADE ON GLUTEN FREE ROLLS

PLAIN BREAD ROLL	\$ 1.20
------------------	---------

SALADS

GARDEN SALAD	GF	\$ 6.00
CHICKEN CAESAR SALAD		\$ 6.00
FRESH FRUIT SALAD		\$ 4.00
SEASONAL FRUIT		\$ 1.00

CHECK AVAILABILITY OF THESE SALADS

BUDDHA BOWLS	\$ 7.50
POTATO SALAD WITH CURRIED	
CHICKEN	\$ 7.50
MEXICAN CHICKEN WITH GUACAMOLE	

BROWN RICE & JALAPENO SALAD	\$ 7.50
GREEK SALAD	\$ 6.00
COUS COUS SALAD	\$ 5.00
PASTA SALAD	\$ 6.00

SUSHI	\$ 5.00
-------	---------

SNACKFOOD

RED ROCK DELI CHIPS	\$ 1.00
JJ SNACKS	\$ 1.50
GRAIN WAVES	\$ 1.00

CHECK OUR DAILY MENU BOARD FOR OTHER SPECIALS INCLUDING HOMEMADE SOUPS, PASTAS, FOCCACIAS, TURKISH MELTS, CURRIES, BURGERS AND SALADS

PLEASE NOTE: PINENUTS ARE USED IN PESTO, CASHEWS, ALMONDS & WALNUTS MAY BE USED IN SOME SPECIALS. IF YOU HAVE NUT ALLERGIES PLEASE CHECK WITH CANTEEN LADIES

Please note these prices are subject to change throughout the year due to the increase in wholesale prices

*** GLUTEN FREE LUNCHES...ALL DAILY SPECIALS CAN BE ADAPTED TO GLUTEN FREE PLEASE ENQUIRE AND THESE WOULD NEED TO BE PRE ORDERED**

MILK AND DAIRY

MOOVE 300ML	\$ 2.50
MOOVE 500ML	\$ 4.00
PLAIN MILK	\$ 2.00
THICK& CREAMY YOGHURT	\$ 2.50
DARE 500ML	\$ 4.00
NIPPY'S MILK 375ML	\$ 3.50
CUSTARD 600ML	\$ 3.50

BEVERAGES

COOLRIDGE WATER 750ML	\$ 4.00
WATER 600ML	\$ 2.00
GATORADE G2	\$ 4.00
HOT MILO (Winter only)	\$ 2.00
PEPSI MAX 600ML	\$ 4.00
COKE ZERO	\$ 2.50
SPRITE ZERO	\$ 2.50
KYNETON MINERAL WATER	\$ 3.00
BERRI FRUIT JUICE 350ML	\$ 3.00

ICECREAMS

SHAKY SHAKE	\$2.00
PADDLEPOPS	\$ 1.60
Bulla FROZEN YOGHURT	\$ 2.50
Twisted FROZEN YOGHURT	\$ 2.50
MILO SCOOP	\$ 3.50
CYCLONE	\$ 2.00
RASPBERRY ICY POLE	\$ 1.30
LEMONADE TWIST	\$ 1.00

DAILY SPECIALS

MONDAY

SWEET CHILLI CHICKEN	\$ 5.00
WRAP (ORDER ONLY)	

TUESDAY

PIZZA SUB	\$ 2.50
-----------	---------

WEDNESDAY

WEDGES	\$ 2.50
sour cream/sweet chilli sauce	\$ 0.50

THURSDAY

CHICKEN BURGERS	\$ 4.00
GF CHICKEN BURGER	\$ 4.00
GF Order only	

FRIDAY

THAI CHICKEN ROLL OR BOWL	\$ 6.00
ORDER ONLY	

Advertisements

Are You A Parent of a Child Aged 2 to 12?

The Parenting and Family Support Centre at the University of Queensland is conducting research into parents' opinions about parenting and parenting programs. If you have a child between 2 and 12 years, we would love to hear your views on parenting and the services that are available to you as a parent. You will need to complete a short survey. To find out more or to participate please visit:

<https://exp.psy.uq.edu.au/parenting>



Tell Us What You Think About Parenting

The Parenting and Family Support Centre at the University of Queensland is conducting research into parents' opinions about parenting and parenting programs.

If you have a child between 2 and 12 years, we would love to hear your views on parenting and the services that are available to you as a parent. You will need to complete a short survey.

To find out more, please visit:
<https://exp.psy.uq.edu.au/parenting>





Local Youth Employment Expo

Looking for work in the region and not sure how to go about it?

Local youth and their families are invited to this employment connection event. Hear from a variety of employers on the benefits of working for their business, and how they go about the hiring process. There will be the opportunity to approach business representatives one-on-one and ask questions.

Local businesses presenting include:

- ☆ Priceline Pharmacy
- ☆ Woolworths
- ☆ Artisan on Lewis
- ☆ Coles
- ☆ Bunnings
- ☆ Ross Granata Motors

DATE	Wednesday 8 May 2019
TIME	4:30pm – 6:30pm (presentation 4:30pm – 5pm)
LOCATION	Mudgee Town Hall Theatre 64 Market Street, Mudgee
AUDIENCE	Persons aged 14 – 25, and their families
BOOKINGS	www.mwrcyouth.eventbrite.com



This event is free, thanks to kind support from KEPCO Bylong.



HOW TO ADULT

HELPING YOU ON THE ROAD TO BECOMING AN ADULT



Need help
with your job
seeking skills?



Looking for tips
on how to budget
and manage
your finances?



Seeking
information
about mental
health?



Want help with
scholarship
applications?

Then this free monthly program is for you.

MAY'S TOPIC

Interview Skills

So you've submitted a fantastic resume for that job you're after, and landed an interview. Come to this informative session to find out all you need to know to ace the interview.

Experienced Human Resources professionals from Programmed Skilled Workforce and Mid-Western Regional Council, will discuss all the things to do, and not do in a job interview to improve your chances of being a successful applicant.

FOR AGES: 15 - 25

DATE	Thursday 9 May	Monday 20 May	Tuesday 21 May
TIME	4:30pm	4:30pm	5:00pm
VENUE	Mudgee Library 64 Market Street	Kandos Library 40 Angus Avenue	Gulgong Library 109 Herbert Street
CONTACT	Youth Services Officer  6378 2850		

Bookings essential: www.mwrcyouth.eventbrite.com

Kindly supported by



TOWN HALL CINEMA

Showing May 10th, 11th, 12th 2019

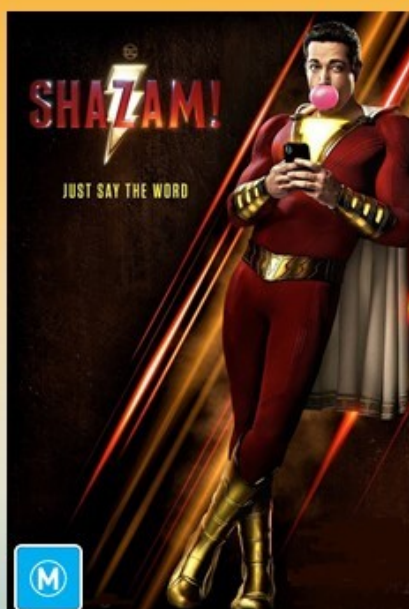
Tickets available online from Monday 29th April

Visit trybooking.com and search 'Mudgee Town Hall Cinema'.



Swimming With Men

Fri 10 th May	7:00pm
Sat 11 th May	7:30pm
Sun 12 th May	4:30pm



Shazam!

Sat 11 th May	4:30pm
Sun 12 th May	2:00pm



Dumbo

Sat 11 th May	11:00am
Sat 11 th May	2:00pm
Sun 12 th May	11:00am

* Tickets also available at the door (if not sold out prior).

For more information visit
midwestern.nsw.gov.au
or Mudgee Town Hall Cinema
on Facebook

Ticket prices

Adults \$15
Children/Concession \$10
(Seniors card not accepted)
Children under 5 years Free

Proudly supported by



Combined
Rotary Clubs of
Mudgee



Australian Air League CALLING ALL FUTURE PILOTS!

If you are 8 years and older become a cadet
and learn about flying, aircraft, marching,
fieldcraft, and make lifelong friends!

**EVERY SCHOOL NIGHT
FRIDAYS 1930-2130**

Everyone is welcome, for more inquiries visit:
mudgee.airleague.com.au | www.airleague.com

Or call: Tom McAdam on 0421 794 065
or: Mark Woodhead: 0411 435 756

Active Kids Vouchers accepted

THE 39TH GULGONG



PRINCE OF WALES EISTEDDFOD 2019

COMMENCES: (SUBJECT TO No. OF ENTRANTS)

DANCE: 5th – 11th MAY 2019

SPEECH: 23rd – 27th MAY 2019

MUSIC: 29th – 31st MAY 2019

Gala Concert Friday 31st May 7pm

The Eisteddfod is open to **ALL** and is a wonderful opportunity to participate in a range of arts alongside others of your same age or ability, including beginners!

ALL ENTRIES CLOSE

DANCE/SPEECH/MUSIC:

31st March 2019, 11:59pm

(NOTE: Late entries will not be accepted)

Further Information:

Copies of the 2019 Syllabus and the Entry Form are available on the website:

www.gulgongeisteddfod.com.

Preferred entry is via:

<http://www.stardom.com.au>

where the 2019 Syllabus can also be accessed.

Sponsorship

Mudgee High School - LINK Program

Proudly supported by

GLENCORE

Ulan Coal Mine



Mudgee High School Presents
Seussical the Musical

Where? Town Hall Theatre

When? 13, 14 and 15 June

Time? 7pm, 2pm matinee Saturday 15

Cost? \$20 per adult, \$15 concession

Tickets available from the school office from 30 May

